



# Rear Flip Seat for EZ GO Installation Instructions

CONTENTS OF KIT:



Tools needed: 1/2" drill bit, wrenches, phillips #2 and #3, and punch tool. Please Note: for more information on installation, refer to the diagrams on the last page of the instructions.

Before you begin installation, remove all accessories from rear of vehicle, if any.



**Step 1**  
Remove Hardware

1. Remove all canopy hardware (nuts, bolts and washers) from 4 corners (2 in front and 2 in rear) of vehicle canopy. Retain the hardware. You will need them to reattach canopy to vehicle.

2. Remove bolts from front seat back. Retain bolts. You will need them to reattach front seat back.



Remove Hardware

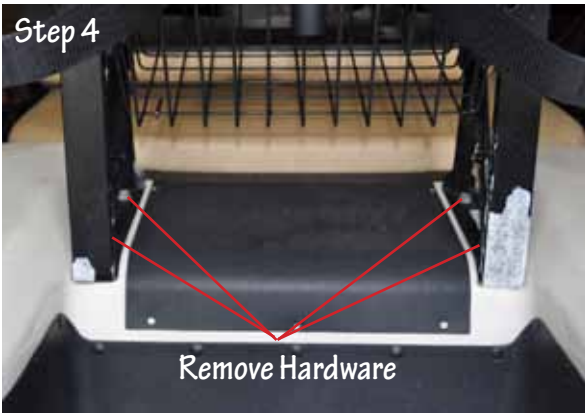


Remove Hardware

3. Remove and retain hardware that holds rear struts to vehicle. Slide out rear struts. You will need this hardware later.

Step 3

Step 4



4. Remove rear basket hardware. Lift off basket.

5. Using a 1/2" drill bit, remove bag well rivets.



Step 6



6. Set in rear seat supports and line up holes in supports with those where basket bolts were removed in step 5. Use hardware in pack #7 to attach seat supports to vehicle. Tighten hardware.

7. Attach seat frame support brackets using hardware from pack #1. Please note: the shorter assembly is on the top location of bracket.



Step 8



8. Attach footrest with hardware in pack #8 in 3 places where bag well rivets were removed.

Step 9



9. Attach seat frame with hardware from pack #12.



Step 10

10. Install armrests using hardware in pack #4 on upper location and hardware in pack #10 in lower location.



Step 11

11. Reattach front seat back using hardware retained from step 2.



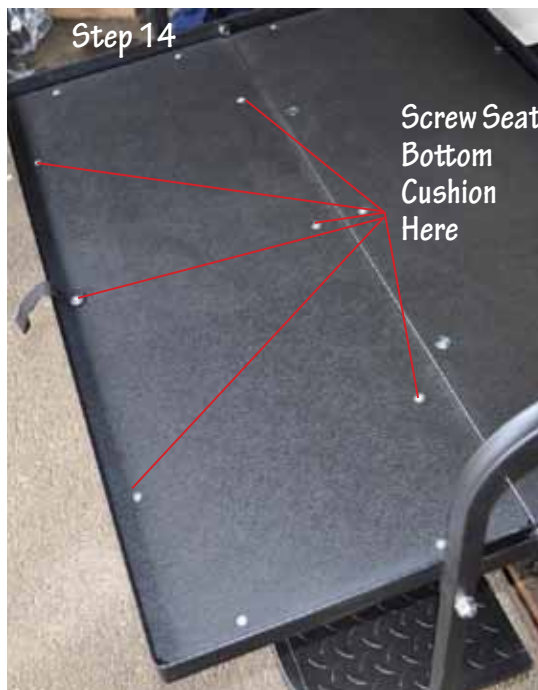
Step 12

12. Attach rear struts, rear seat back brackets and rear seat supports as shown using hardware in pack #5.



Step 13

13. Attach rear seat back using hardware from Pack #2.



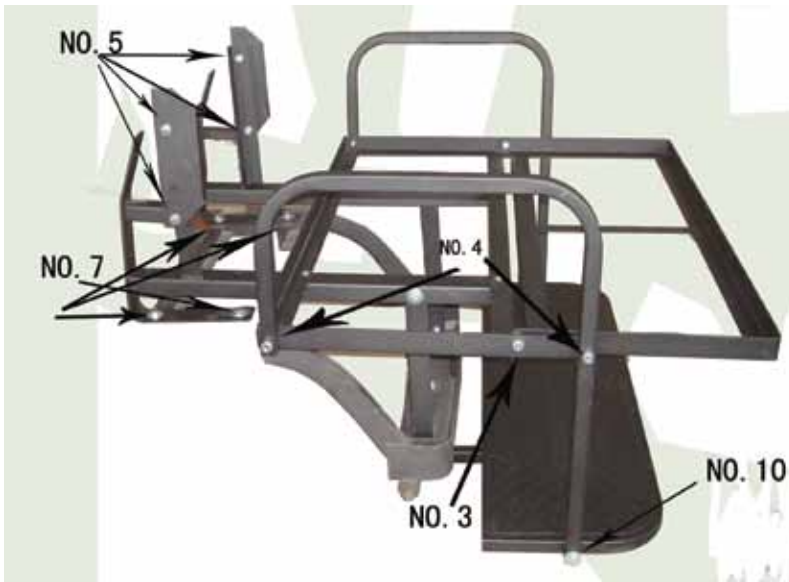
Step 14

Screw Seat Bottom Cushion Here

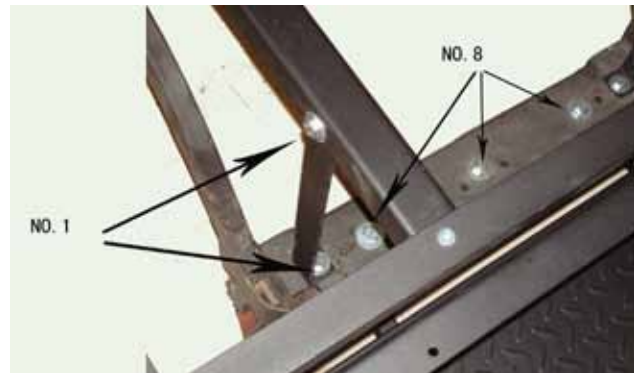
14. Use punch tool to punch holes in each end of strap. Attach seat bottom to seat frame using hardware from Pack #9. Attach Strap to seat frame in location shown.



15. Reattach canopy to vehicle using hardware retained in step 1.



**INSTALLATION DIAGRAMS**



**CONTENTS OF HARDWARE PACKS**

**Pack #1**

- (4) 10mm x 40mm Shoulder Hex Bolts
- (4) 10mm anti-slip nuts
- (8) 10mm x 25mm x 2mm washers

**Pack #2**

- (4) 6mm x 40mm Shoulder hex bolts
- (4) 6mm x 18mm x 1.5mm washers
- (2) 6mm Lock Washers

**Pack #3 (Installed on seat frame)**

- (2) 10mm x 25mm Shoulder Hex Bolt
- (2) 10mm Anti-slip nut

**Pack #4**

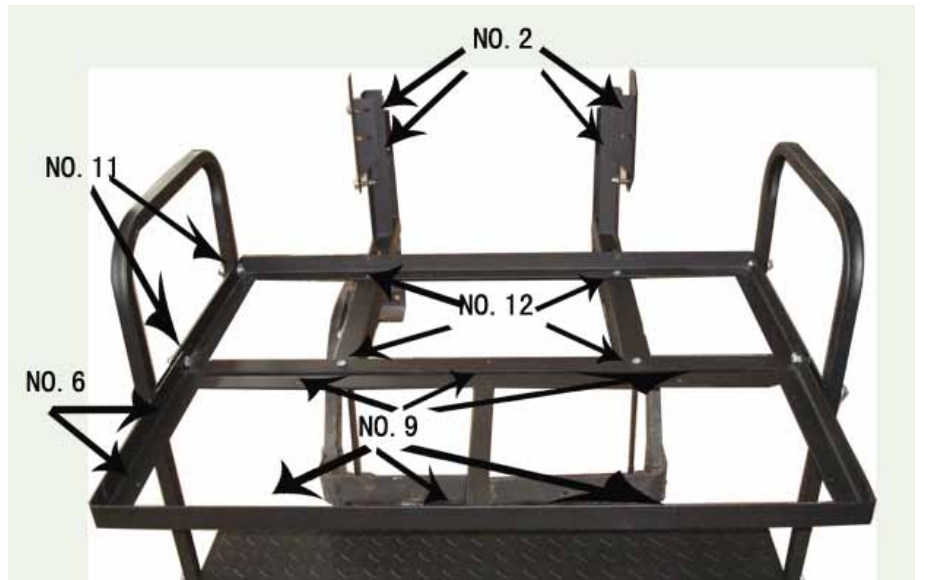
- (2) 10mm x 25mm Shoulder Hex Bolts
- (2) 10mm x 40mm Phillips Head Bolts
- (4) 10mm Anti-Slip Nuts
- (4) 10mm x 25mm x 2mm washers

**Pack #5**

- (4) 8mm x 40mm Shoulder Hex Bolt
- (4) 8mm Anti-slip nut
- (4) 8mm x 18mm x 1.5mm washers

**Pack #6**

- (4) 6mm x 20mm Phillips Head Bolts
- (4) 6mm Anti-slip nuts



**Pack #7**

- (4) 10mm x 25mm Shoulder Hex Bolts
- (4) 10mm x 30mm x 2mm washers
- (4) 10mm Spring Washers

**Pack #8**

- (3) 12mm x 40mm Shoulder Hex Bolts
- (3) 12mm Anti-slip nuts
- (6) 12mm x 36mm x 2mm washers

**Pack #9**

- (6) 6mm Phillips Head Wood Screws

**Pack #10**

- (2) 10mm x 70 Shoulder Hex Bolt
- (2) 10mm Anti-slip Nuts
- (4) 10mm x 25mm x 2mm washers

**Pack #11**

- (already installed on seat frame)
- (6) 6mm x 25mm Cross Countersunk head
- (6) 6mm Anti-slip nuts

**Pack #12**

- (4) 8mm x 30mm Phillips Head Bolts
- (4) 8mm Anti-slip nuts